

Unlimited freedom for surfaces.

Just imagine you can create the interior walls in your apartment or house exactly how you always wanted to: elegant and seamless. In a polished, shiny or slightly matt finish.

Let your eyes see and your hands feel and experience a new kind of wall design indoors!

Unique creations.

Walls become creative areas with PANDOMO Wall. The lighting of a room can be taken into account just as much as the style of the furniture or the architecture. Every wall, every room becomes unique. Coloured surfaces for a very contemporary design. Grey shades created by skimming for a post-industrial loft ambience. Warm earth shades with a texture for a touch of Tuscan light. The palette of possibilities is endless.



Elegant and functional.

PANDOMO Wall also excels through its suitability for everyday life. Thanks to being the basic ingredient cement, the surface is extremely impact-resistant and considerably harder than conventional decorative renders. The surface is treated with PANDOMO stone oil which is totally absorbed, leaving no trace of moisture whilst ensuring the surface is dirt resistant to protect against staining. What remains is pure elegance.



Innovation of the year.

Testimony to the fact that it pays to harmonise design and functionality is the award „Products of High Architectural Quality“ awarded for PANDOMO Wall by the trade journal AIT at the Domotex 2004.

As special recognition of the outstanding product features, PANDOMO Wall has been nominated by the Federal Ministry of Economics and Technology for the Federal Republic of Germany's 2007 Design Prize.



DESIGNPREIS
2007

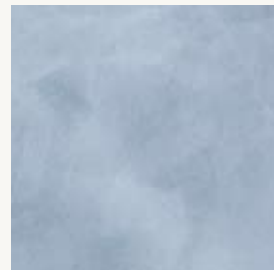
NOMINEE



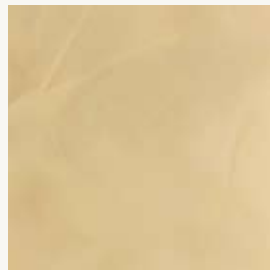
Simple Elegance.

The basis of this unbelievable variety and versatility of PANDOMO Wall is PANDOMO W1, the white, cement-based decorative render. Used on its own PANDOMO W1 produces an elegant surface. Colour pigments or the incorporation of textures extend the possibilities. Even large coloured surfaces can be produced without any seams using PANDOMO Wall.

Exemplary PANDOMO Wall surfaces



PANDOMO Wall – Smooth texture, single-colour



PANDOMO Wall – Smooth texture, two-colour



PANDOMO Wall – Slate texture, single-colour



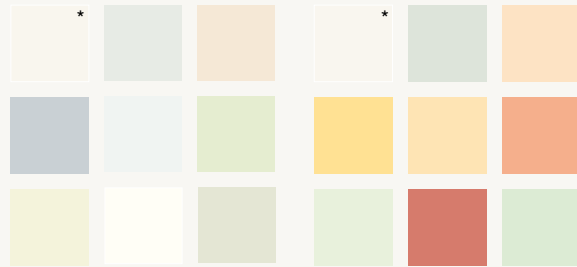
PANDOMO Wall – Slate texture, two-colour

panDOMO Wall decorative render W1

Test	Test standard	Time period	Result
Layer thickness	—	—	1 – 20 mm
Reworking (+20°C)	—	—	after 1 hour
Pressure resistance	—	after 1 day	approx. 4,5 N/mm ²
		after 7 days	approx. 8,0 N/mm ²
		after 28 days	approx. 13,0 N/mm ²
Tensile bending strength	—	after 1 day	approx. 1,5 N/mm ²
		after 7 days	approx. 3,0 N/mm ²
		after 28 days	approx. 5,0 N/mm ²
Steam diffusion coefficient μ	DIN 53122 (total system)		approx. 210

Free Colour Choice.

With the five PANDOMO colour groups the shades of the wall and floor surfaces can be harmonised individually and exactly suit the interior and the entire colour composition. The PANDOMO colour groups are in line with current architectural colour fashions and frequently serve as a source of inspiration for your own designs.

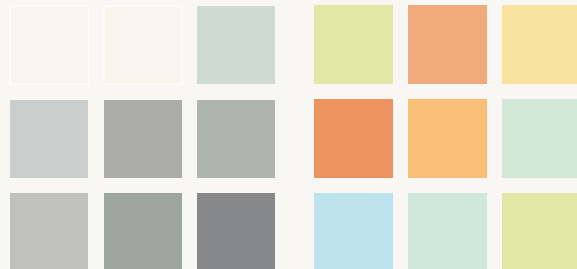


1. Light

Light-coloured walls enhance a room's visual appeal and have a stimulating effect on our mood.

2. Natural

The muted colours of the Natural shades impart a sense of security. In the room these colours often have the effect of diffused, soft daylight.

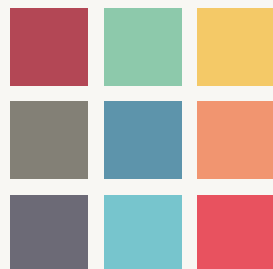


3. Pure

Achromatic greys are close to the colours we see in nature; they come across as „real“.

4. Bright

These colours are inspired by travels to southern countries, whose colours have been adapted to our light conditions.



5. Accent

A confident colour accent stimulates the human imagination. Saturated colours have a markedly energising or exciting effect.

* This shade is only suitable for PANDOMO W1.

The colour standards have all been produced by printing and are only indicative. Variations in colour cannot be ruled out.

PANDOMO Wall product features.

- Individual, versatile design possibilities.
- Elegant, smooth and textured surfaces.
- High quality and exclusiveness.
- Fluid transition from walls to ceiling possible.
- One material for both walls and ceilings.
- Incorporation of other materials possible.
- Almost any shade mixable.
- The areas treated with PANDOMO SL stone oil are breathable.
- Impact-resistant, hard-wearing surfaces.
- Later re-treatment of the oiled areas is possible at any time.
- Processing time: approx. 30 minutes.
- Quick and easy to apply.
- High coverage.

Ask your specialist!

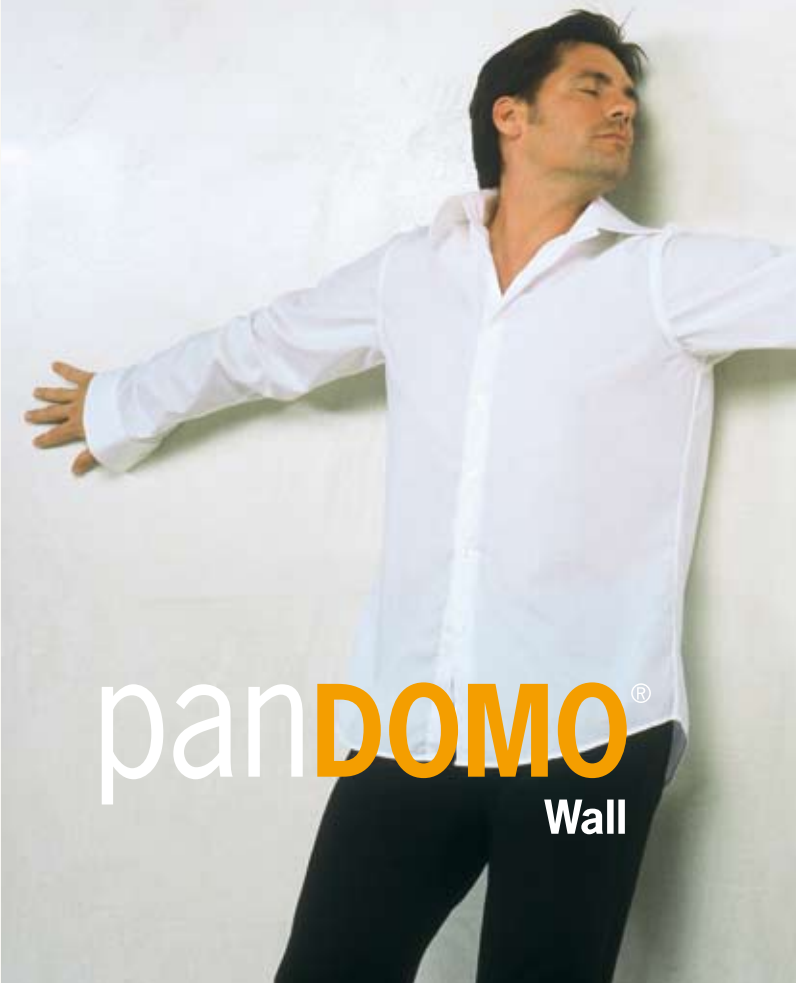
Do you already have your personal PANDOMO design in mind? Your local painting company will design your walls with PANDOMO Wall according to your ideas, in exactly your favourite shade, with creative textures, pure or sophisticated and with individual techniques which will produce a unique result. You will be amazed how quickly, cleanly and easily everything is finished.



ARDEX GmbH
Friedrich-Ebert-Straße 45
D-58453 Witten
Tel.: +49 (0) 23 02/664-505
Fax: +49 (0) 23 02/664-437
pandomo@ardex.de
www.ardex-pandomo.de



The revolution on the wall.



panDOMO[®]
Wall